

**CHIRP-READY**



## B75HW Tilted Element™ Thru-hull

### 600 W

Airmar's low profile Chirp-ready transducer models are the perfect addition to smaller boats such as center consoles. The B75HW combines the benefits of the high frequency band for amazing target separation on baitfish and schooling gamefish, with a wide 30° beamwidth for maximum coverage under the boat. The B75H transducer delivers up to 100 kHz of total bandwidth in just one installation and delivers amazing coverage under the boat in depths to 106 meters (350').

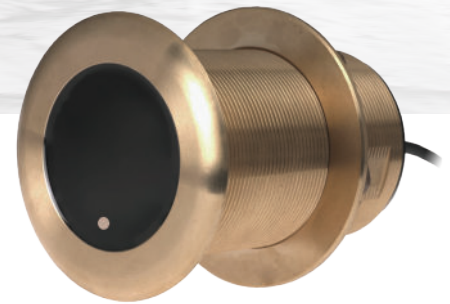
B75HW transmits across the following bandwidth:

- High frequency 150 to 250 kHz

Tilted Element™ transducers have the ceramic element fixed at a 20°, 12° or 0° angle within the housing. The transducer is installed almost flush to the hull. The tilt of the element corrects for the hull deadrise by orienting the beam directly down. This ensures maximum echo returns to the transducer for more accurate depth readings.

The B75HW is available in three Tilted Element models:

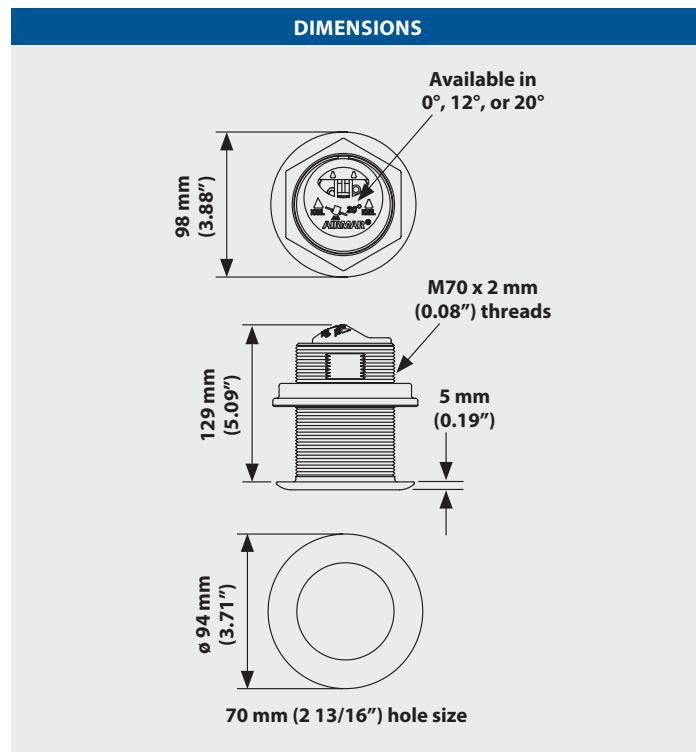
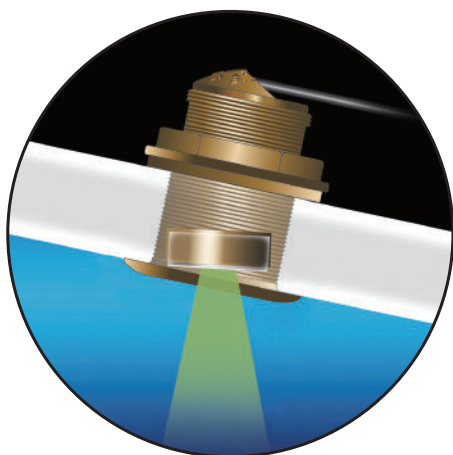
- Fixed 20° tilted version for 16° to 24° hull deadrise
- Fixed 12° tilted version for 8° to 15° hull deadrise
- Fixed 0° tilted version for 0° to 7° hull deadrise



### Features

- Depth and fast-response water-temperature sensor
- 600 W with a maximum depth performance to 106 m (350')
- High frequency: 150 to 250 kHz
- 30° beamwidth
- High frequency delivers great shallow-water performance, bottom detail, and clear fish-target returns
- Low-profile, thru-hull housing provides good resolution at speed when installed properly
- Bronze housing for use on stepped, planing or displacement hull
- Exclusive Xducer ID® technology

SPECIFICATIONS	
Weight	1.4 kg (3 lb)
Recommended Boat Length	Up to 8 m (26')
Hull Material	Fiberglass or wood
Hull Deadrise	Up to 24°
Acoustic Window	Urethane
Hole Diameter	70 mm (2-13/16")
Transducer Element	One internal broadband ceramic assembly



[www.airmar.com](http://www.airmar.com)

©2023 Airmar Technology Corporation



B75HW\_rB 10/24/23

As Airmar constantly improves its products, all specifications are subject to change without notice. All Airmar products are designed to provide high levels of accuracy and reliability, however they should only be used as aids to navigation and not as a replacement for traditional navigation aids and techniques. Other company or product names mentioned in this document may be trademarks or registered trademarks of their respective companies, which are not affiliated with Airmar.

