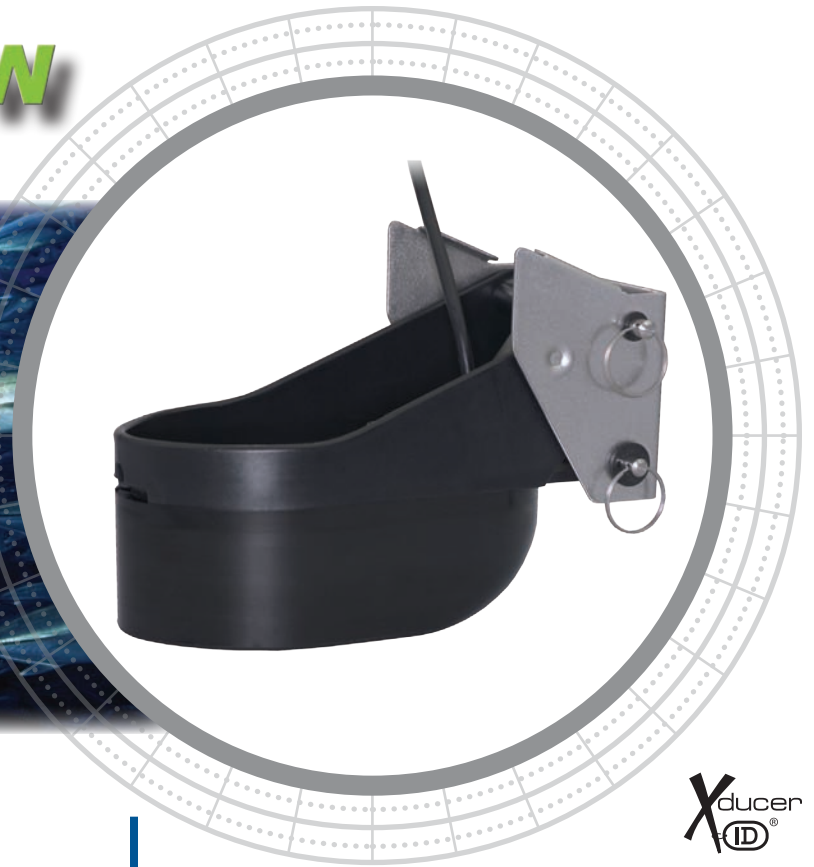


# TM258

# NEW



## New Look and Better High-Speed Performance

The industry's first 1 kW transom-mount transducer has a new high-performance mounting bracket. The sleek, new bracket makes the TM258 easier to install. Additionally, its streamlined shape will give you improved high-speed performance up to 30 knots (35 MPH).

The TM258 will make 600 W sounders respond like a more powerful model. Get 16 times the sensitivity compared with a standard transom-mounted transducer. The TM258 packs four 50 kHz/200 kHz elements to focus narrow beams at both frequencies, so you'll see crisp targets and clear bottom definition.

## 1 kW

Entry-Level  
Transom-Mount Transducer

### Fishing Applications

- Inshore and blue-water trolling
- Deep-water bottom and structure fishing up to 500 m (1,640')
- The versatile 1 kW transducer for all types of fishing

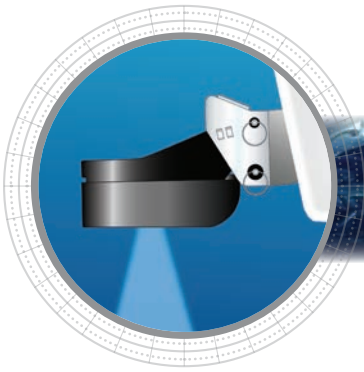
### Features

- Depth and new fast-response water-temperature sensor
- Elliptical beam covers larger bottom area
- Fits existing TM256 and TM258 models
- Bracket kick-up assembly locks in the "up" position and will not damage the transom
- Accommodates transom angles between 3° and 21°
- Urethane housing
- Boat Size: 8 m to 12 m (25' to 40')



*Sensing Technology*

[www.airmar.com](http://www.airmar.com)



## Technical Information

50/200 kHz-BIq		
<b>Number of Elements and Configuration</b>		
<b>Beam Width (@-3 dB)</b>	15° x 21°	3° x 5°
<b>RMS Power (W)</b>	1 kW	1 kW
<b>TVR</b>	161 dB	173 dB
<b>RVR</b>	-174 dB	-183 dB
<b>FOM</b>	-17	-9
<b>Q</b>	9	15

MAXIMUM DEPTH RANGE	
50 kHz	200 kHz
441 m to 647 m (1,500' to 2,200')	206 m to 294 m (700' to 1,000')

BEAM DIAMETER VS DEPTH		
Depth	50 kHz	200 kHz
9 m (30')	2.4 m x 3.3 m (8' x 11')	0.6 m x 0.9 m (2' x 3')
30 m (100')	8 m x 12 m (25' x 40')	1 m x 2.7 m (5' x 9')
122 m (400')	30 m x 50 m (98' x 163')	6 m x 11 m (20' x 35')
305 m (1,000')	74 m x 124 m (245' x 407')	16 m x 26 m (52' x 87')

TRANSDUCER COMPARISON			
Model	Power	Rating	Performance Increase
P66	600 W	Good	Benchmark model for comparison
<b>TM258</b>	<b>1 KW</b>	<b>Better</b>	<b>25 times more sensitive at 50 kHz</b> <b>16 times more sensitive at 200 kHz</b>
TM260	1 KW	Superb	50 times more sensitive at 50 kHz 13 times more sensitive at 200 kHz

Due to the wide beams of the P48W and TM270W, they have been omitted from the table.

SPECIFICATIONS
<b>Weight:</b> 3.6 kg (7.9 lb)
<b>Hull Deadrise:</b> Up to 25°
<b>Acoustic Window:</b> Urethane

### DIMENSIONS

