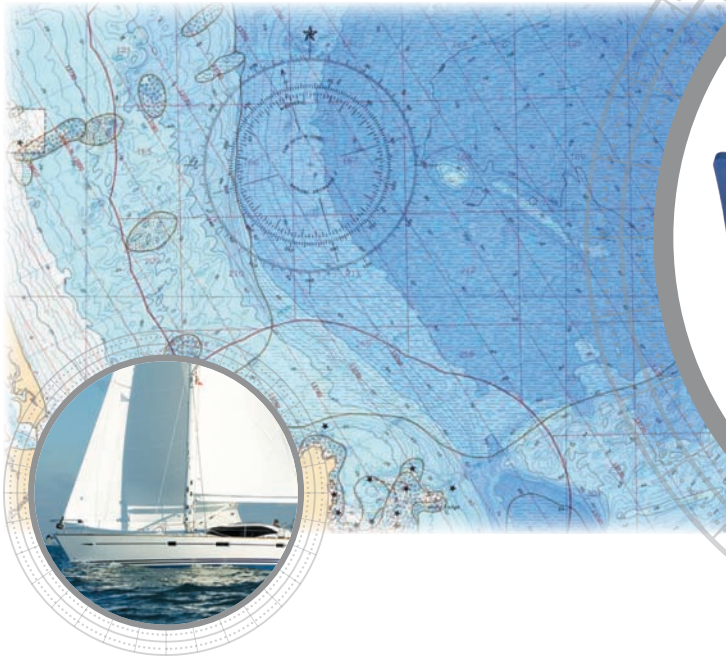


# B122



## The Smart Alternative!

Airmar's B122 Smart™ Sensor features embedded micro-electronics. Depth and temperature signals are processed inside the sensor and can be displayed on any radar, chart plotter, or device that accepts NMEA 0183 or NMEA 2000® data. The 235 kHz frequency prevents mutual interference with other echosounders on the vessel.

## Stronger Echo Returns

The B122 retractable, long-stem, bronze transducer is designed for use in thick hulled wooden boats or vessels with steep deadrise. The included high-performance fairing vertically orients the sound beam for stronger return echoes resulting in optimal sounder performance. The B122 can also be installed as a low-profile mount with an adaptor ring.

## Thru-Hull Retractable, Long-Stem Smart™ Sensor

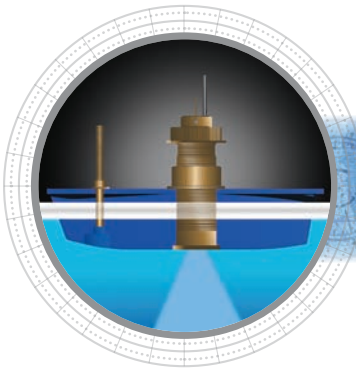
### Features

- Long-stem, depth and temperature with a High-Performance Fairing
- Can install as a low-profile with adaptor ring
- 235 kHz frequency prevents mutual interference with other echosounders on the vessel
- For thick hulled or steep deadrise vessels
- Retractable, Bronze housing only
- Available in NMEA 0183 or NMEA 2000® versions
- 6 m (20') NMEA 2000 cable or 10 m (33') NMEA 0183 cable



*Sensing Technology*

[www.airmar.com](http://www.airmar.com)



## Technical Information

### 235 kHz Broadband

<b>Number of Elements and Configuration</b>	○
<b>Beamwidth (@-3 dB)</b>	12°
<b>RMS Power (W)</b>	100 W

### SPECIFICATIONS

**Weight:** 3.9 kg (8.7 lb)  
**Acoustic Window:** Urethane  
**Hull Deadrise:** Up to 28° with fairing  
**Hole Diameter:** 51 mm (2")  
**Data Update Rate:** 1 per second  
**Minimum Depth Range:** 0.5 m (1.6')  
**Maximum Depth Range:** Up to 180 m (590')—Broadband  
**Pressure Rating:** 3 m (10')  
**Pulse Rate:** 20,000 p/nm\* (5.6 Hz per knot)—\*p/nm = pulses per nautical mile  
**Supply Voltage:** 9 VDC to 16 VDC  
**Supply Current:** <200 mA  
**Standard Cable Length:**  
 —10 m (33')—NMEA 0183 cable  
 —6 m (20')—NMEA 2000 cable  
**Temperature Sensor Accuracy:** ±0.5°C (±1.8°F)  
**Temperature Sensor Range:** -10°C to 40°C (14°F to 104°F)  
**NMEA 2000® Load Equivalency Number (LEN):** 4  
**CE Regulation:** Complies to IERC60945

### DATA OUTPUT PROTOCOL

**NMEA 0183 Sentence Structure**  
 \$SDBT, DDPT... Depth  
 \$YXMTW..... Water Temperature

**NMEA 2000® Supported PGNs**  
 59392..... ISO Acknowledgement  
 600928..... ISO Address Claim  
 126208..... Acknowledge Group Function  
 126464..... Transmit PGN List Group Function  
 126464..... Received PGN List Group Function  
 126996..... Product Information  
 128267..... Water Depth (With Transducer Offset)  
 130310..... Environmental Parameters (Water Temperature)  
 130311..... Environmental Parameters (Water Temperature)  
 130312..... Environmental Parameters (Water Temperature)

### DIMENSIONS

